

SCENES-N-NATURE®

TERRAIN BASE COLOR NT6186

INSTRUCTIONS

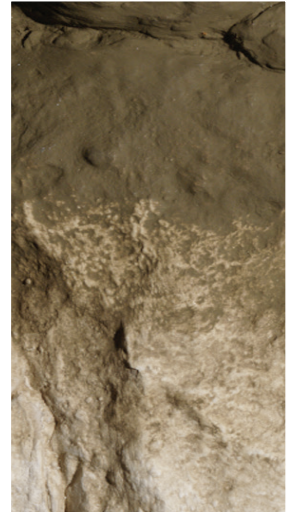
Apply as a base color on plaster to replicate soil and vegetation. Brush on full-strength for an opaque coating. For a lighter color, dilute with water (recommended: 1-part Terrain Base Color to 2-parts water). Add more or less water to change color intensity. When dry, seal with a coat of Habitat Adhesive (NF6099).



Tips for Coloring Plaster

There are many variables that affect how plaster accepts coloring. Follow the below tips for the best results.

- Plaster accepts coloring best when it is dry and porous. Plaster sets in minutes but can remain wet for hours or days. Allow shallow plaster applications to dry a minimum of 24 hours before coloring with Terrain Base Colors. For large, deep plaster applications, wait a minimum of 48 hours (or longer) before coloring. Wet plaster will feel cool to the touch. Dry plaster will be room temperature.
- Avoid rubbing, smoothing or marring the plaster as this will close the plaster's pores and prevent color absorption. Sealing plaster with adhesive will also prevent absorption and will require full-strength Terrain Base Colors.
- Terrain Base Colors will lighten as they are absorbed by the plaster and dry. It may take a full day for the plaster to reach the final color.
- Because porosity differs in plasters, there may be areas which do not accept diluted Terrain Base Color and remain very light or white. Touch up these areas with a more concentrated form of Terrain Base Color.



Earth

Conforms to Health
Requirements of ASTM
D4236



CARE INFORMATION: Clean up spills immediately with warm, soapy water. Product may stain certain fabrics and surfaces. Take care to cover project area and clothing appropriately.

Not suitable for children under 14 years! / Pas adapté aux enfants de moins de 14 ans! / No adecuado para niños menores de 14 años! / Nicht geeignet für Kinder unter 14!

Made in USA